



**MINISTRY OF TRANSPORT
LAND PUBLIC TRANSPORT AGENCY**

**GUIDELINES -
APPLICATION FOR DEVELOPMENT AND
RESTRICTED ACTIVITY WORKS WITHIN
RAILWAY PROTECTION ZONE (RPZ)**

Contents

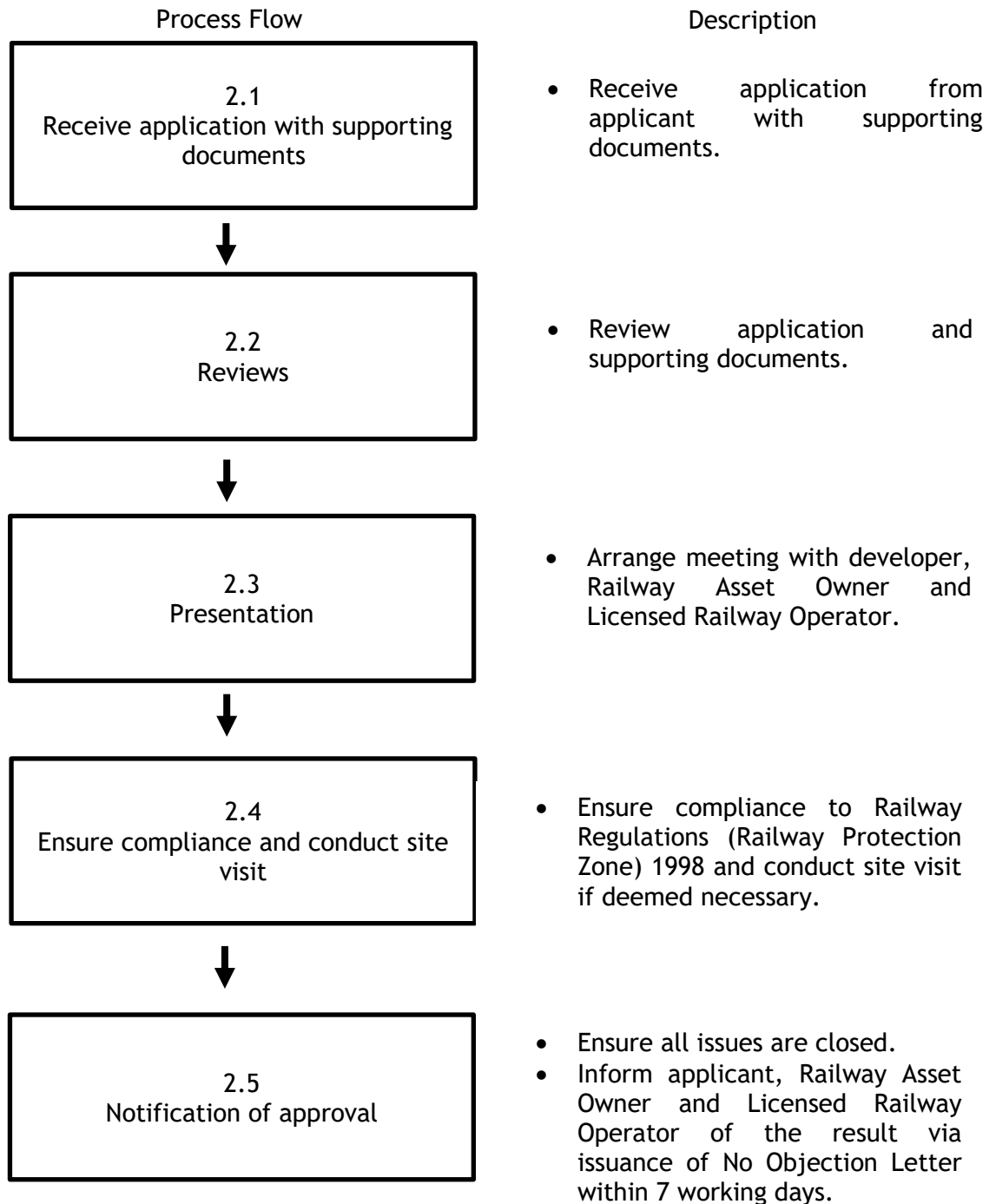
1	INTRODUCTION	3
2	PROCEDURE DETAILS	3
3	SUPPORTING DOCUMENTS	4



1. INTRODUCTION

This procedure is to provide guidelines on application for development and restricted activity works within Railway Protection Zone (RPZ) as per Railways (Railway Protection Zone) Regulations 1998, P.U. (A) 367.

2. PROCEDURE DETAILS





3. SUPPORTING DOCUMENTS

No.	Supporting Documents
1.	Application Letter for proposal of Development and Restricted Activity Works Within Railway Protection Zone (RPZ)
2.	Approval Letter/ No Objection Letter from Railway Asset Owner
3.	Development Order from Local Authorities
4.	Hazard Identification, Risk Assessment and Control (HIRAC)
5.	Drawing (Layout Plan, Details, Cross Section, Structural Plan etc.)
6.	Method Statements
7.	Emergency Response Plan (ERP)
8.	Construction Work Programme
9.	Instrumentation and Monitoring Plan
10.	Traffic Management Plan (TMP) (if interface with road traffic)
11.	Latest site photos
12.	Other related documents

Note: For further enquiries kindly email us at bpr@apad.gov.my or call our officer at 03-2603 6700 (Rail Enforcement Division)